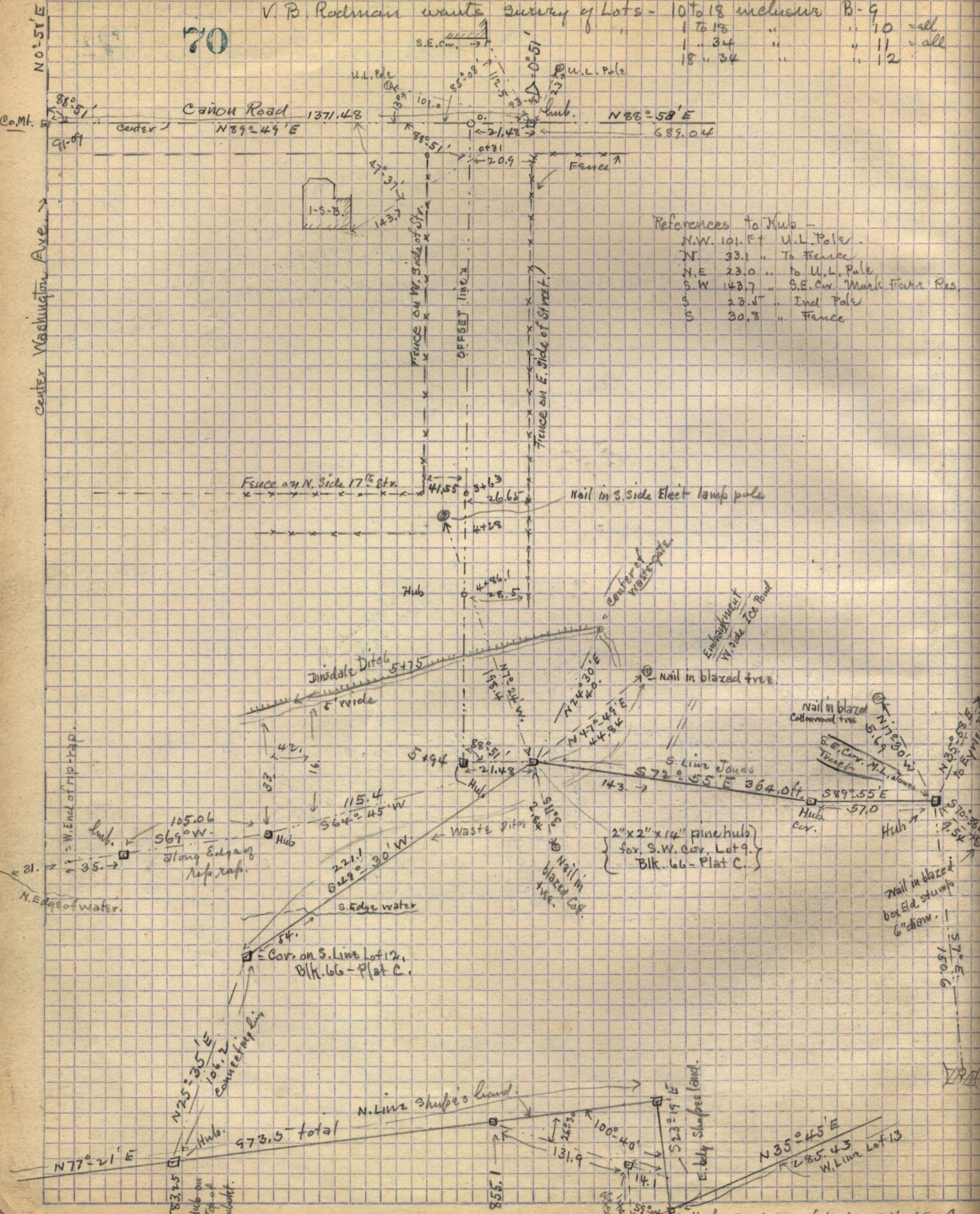


Sect. 7-00

V. B. Rodman wants Survey of Lots - 10 to 18 inclusive

B-9	10	= all
	11	= all
	12	= all

70



References to Hub -

N.W. 101.1° E	U.L. Pole
N. 33.1	To Fence
N.E. 23.0	To U.L. Pole
S.W. 143.7	S.E. Cor. Mark Tower Res.
S. 23.1	Ind. Pole
S. 30.3	Fence

Nail in S. Side Elect. lamp pole

Nail in blazed tree

Nail in blazed Cottonwood tree

2" x 2" x 14" pine hub
 Sav. S.W. Cor. Lot 9.
 Blk. 66 - Plat C.

Nail in blazed box E.2 stump 6" diam.

37° E 150.0

N 0° 51' E

Center Washington Ave

Co. Mt.

Canyon Road 1371.48
 N 89° 49' E

N 88° 58' E
 689.04

Fence on N. Side 17' 6" Str.

Dredge Ditch
 57.5
 5' wide

105.06
 S 69° 0' W
 along Eulogy
 rap rap.

Cor. on S. Line Lot 12,
 Blk. 66 - Plat C.

N. Line Shupe's land

N 35° 45' E
 1285.43
 N. Line Lot 13

N. End of Trip Trap.
 N. Edge of Water.

179